

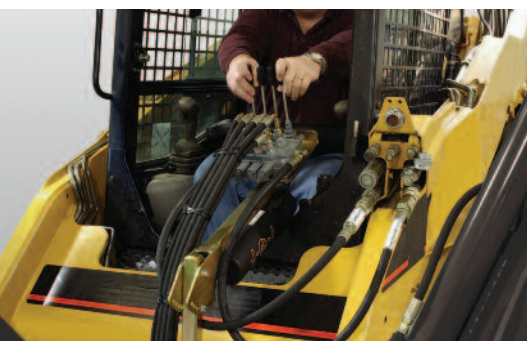


Tree Spade

Turn your skid loader into a high-speed, labor-saving transplanting unit. A tree can be dug or transplanted without the operator having to leave the loader. Spade is designed with a very short frame reducing the need for stabilizers and counterweights. Fingertip controls are integrated into the loader handles. The blades of the tree spade overlap to ensure clean root cutting and support of the root ball.



Model 4S with 4 steel cutting blades shown here.



This Tree Spade has FULL hydraulic controls for in-cab operation and is fully adjustable to fit most skid steers.

FEATURES

- Tree Spade comes complete and ready to use, including all-hydraulic hoses, couplers, and controls
- Good for transplanting hardwood trees to 2 1/2" diameter and evergreens to 3"
- Three steel cutting blades are 3/8" thick
- Adjustable control valve stand
- All bearings outfitted with grease fittings
- Removable blades for easy sharpening
- Short frame design for increased down-pressure reducing the need for rear stabilizers



"A Legacy of Excellence Since 1948"

www.erskineattachments.com

SKID STEER



SPECIFICATIONS / OPTIONS

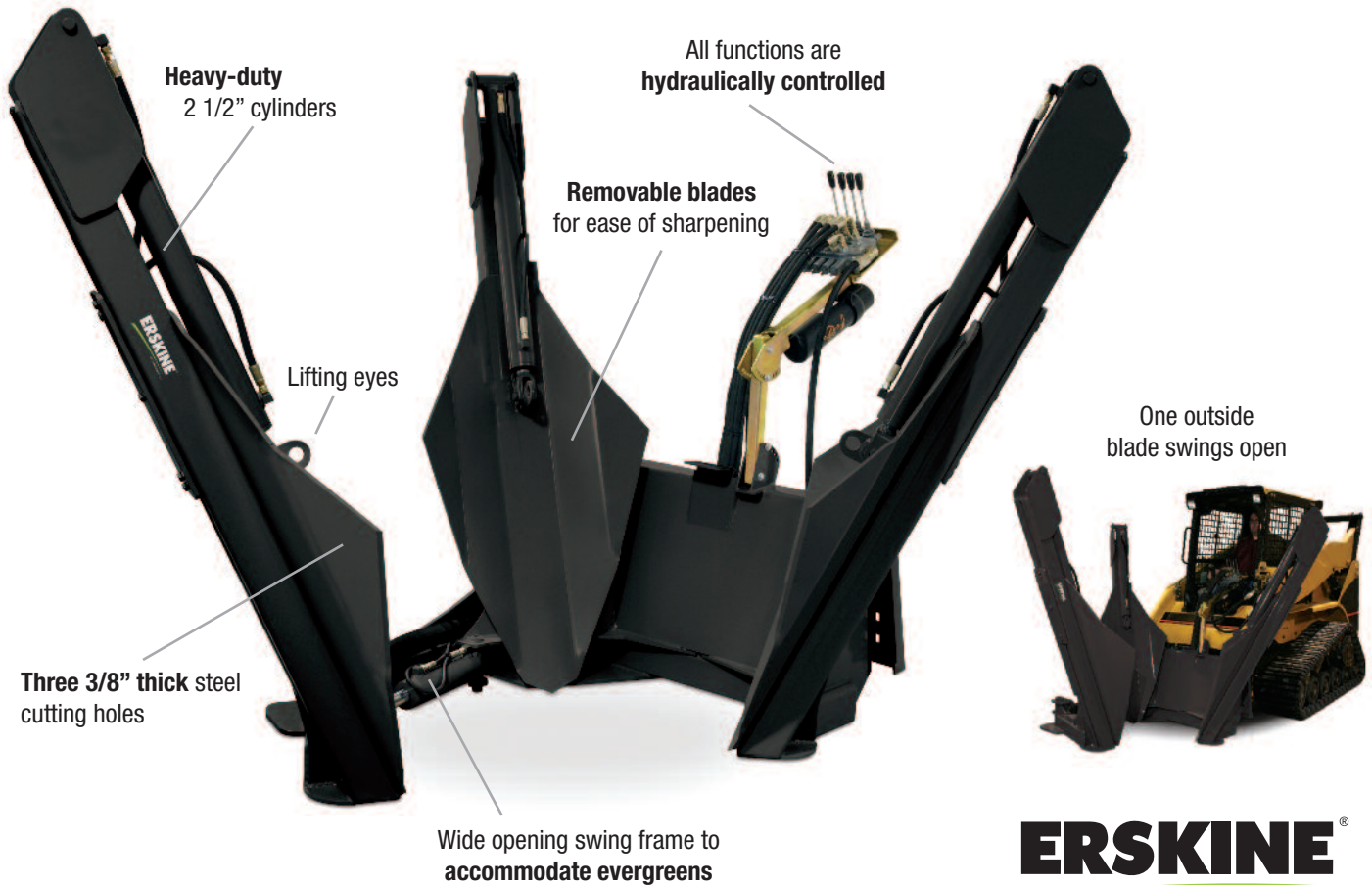
Model	3S	4S
Part Number	900806	900808
Tree Size (Evergreen)	3"	4"
Tree Size (Hardwood)	2.5"	3"
Root Ball Diameter	30"	40"
Root Ball Depth	29"	30"
Blade Angle	25°	25°
Number of Blades	3	4
Blade Thickness	3/8" Mild Steel	1/4" High Alloy
Slides	Steel	Steel
Blade Truncation	Semi	Full
Outside Towers Swing Open	Yes	Yes
Operator Controls	Hydraulic	Hydraulic
Hydraulic Flow	5-25 GPM @ 2,500 psi	5-25 GPM @ 2,500 psi
Hydraulic Remotes	1	1
Shipping Weight	1,450 lb.	1,850 lb.
Weight with Root Ball	1,950 lb.	3,050 lb.
Width (Bottom / Top)	48" / 90"	66" / 84"
Length (Bottom / Top)	50" / 81"	58" / 84"

Options

- External Control (wired)
- External Control (wireless)
- Factory Installed Couplers



Cuts a 30" diameter root ball 29" deep with fully truncated blades. Blade angles are 25°.



Prices, financing and specifications subject to change without notice.

"Pray without ceasing" – 1 Thessalonians 5:17