

Specifications:



MODELS

DT80J

POWERED BY



DT80CT



DT80K



ENGINE:

John Deere diesel - Model 4045 TF
276 cubic inches (4.5 liter) 74 HP, Tier 4
at 2500 RPM w/95 amp alternator

Cummins diesel - Model B3.3T
199 cubic inch (3.3 liter) 74 HP, tier 4
at 2500 RPM w/120 amp alternator

Kubota diesel - Model V3600T
220 cubic inch (3.62 liter) 84.5 HP,
tier 3 at 2500 RPM w/ 90 amp alternator

DIMENSIONS:

Weight: 5,300 lbs. standard unit (w/canopy)
Height - 103 inches (w/canopy)
Length - 172 inches
Width - 96 inches (transport)
Wheelbase - 133 inches
Turning Radius - 13 feet (inside)

CHASSIS:

Welded 6" channel w/gussets at all stress
points. Certified roll over protection (ROPS)
structure meets and exceeds all Federal
Standards

STEERING:

Orbital; hydraulic power steering

HYDRAULIC TANK:

30 gallon capacity

FUEL TANK:

38 gallon capacity

COOLING SYSTEM:

Heavy duty vertically mounted radiator
and oil cooler w/8,000 cfm suction fan

FRONT AXLE:

Heavy-duty truck type (full oscillating)

REAR AXLE:

3/4 Ton-heavy duty semi-float differential
w/spring suspension system.

WHEELS:

Four - 6 bolt (15" x 6") steel spoke

TIRES:

Four radial ST225/75 R15 load range D

BRAKES:

Four wheel hydraulic w/dual master
cylinder and mechanical parking brake.

TRANSMISSION:

Infinitely variable hydrostatic pump and
motor driving a differential rear axle
through a 2-speed gearbox.
Low range: 0 - 12 mph
High range: 0 - 34 mph

HYDRAULIC SYSTEM:

Load compensated piston pump
28 GPM w/2,500 PSI operating pressure
10 micron high pressure suction filter

BRUSH CORE:

8 foot all welded tubular construction
Direct drive motor enclosed in core (200 RPM)
Sweeping width: 96 inches
10" x 32" Prostran wafer type brush filler

SWEEPING ANGEL:

45 degrees (left and/or right)
Circle swing frame mounted on 10 heavy-duty
sealed, tapered bearings with debris guards.

BRUSH COVER:

12 gauge steel, 140 degree full brush length with
end plate covers and full length rock deflector

BROOM CONTROLS:

Electronic joystick control for brush on-off with
trigger for float, push buttons for broom on-off
and speed control. Broom lift, adjustable down
pressure and swing right to left through joystick
movement.

CONTROLS & ACCESSORIES:

Padded seat with arm rests and seat belts,
dual element air cleaner & precleaner, 12 volt
ignition system. 950 CCA battery and back-up
alarm. Gauges include tachometer, hour meter,
water temp, oil pressure, fuel and volt meter.



SB Manufacturing Inc.

Model DT80



SB Manufacturing Inc.

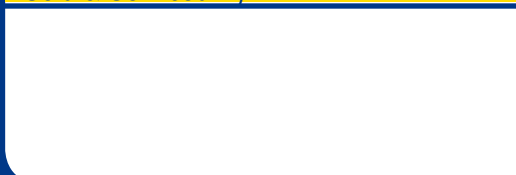
Optional Equipment:

Enclosed Cab w/2 Doors
Air Conditioning
Heat & Defroster
West coast Mirrors
Light Group
Strobe Light
Brush Side Shift

Engine PreCleaner
Extension air Stack
Hydraulic Temperature Gauge
170 Gallon Water System
7 1/2' Scraper blade
Tilt & Telescopic Steering
Spare Tire
Front Fenders
8' Polystrip Brush

Curb & Gutter Brush
Suspension Seat
Tow Bar
Block Heater
Ether Start Kit
Audible Engine Alarm
Emergency Brake Safety System
Safety Engine Shutdown System
Vandal Locks

Sold & Serviced By:



3707 W. McCormick
Wichita, KS 67213
Ph: 316.941.9591
Fax: 316.942.5672

www.superiorbroom.com

01/2015

*"Superior Quality
& Performance!"*



OPTIONAL SCRAPER BLADE
Cutting edge is 7 1/2" with power angle, down pressure & float positions for cleaning packed heavy material.



OPTIONAL GUTTER BRUSH
Gutter brush has 27 inch brush head with hydraulic power angle, tilt down pressure and float. Brush is mounted to front bumper for better operator visibility and folds up when not in use.



BROOM CONTROLS
Electronic joystick control for all broom functions with red LED lights indicating brush speed, full gauge package with tachometer, oil & water gauge, volt meter, fuel gauge and sealed rocker switches with red indicator lights.



TRAVEL CONTROL
Dual hydrostatic transmission foot controls are more responsive and comfortable for operator comfort.



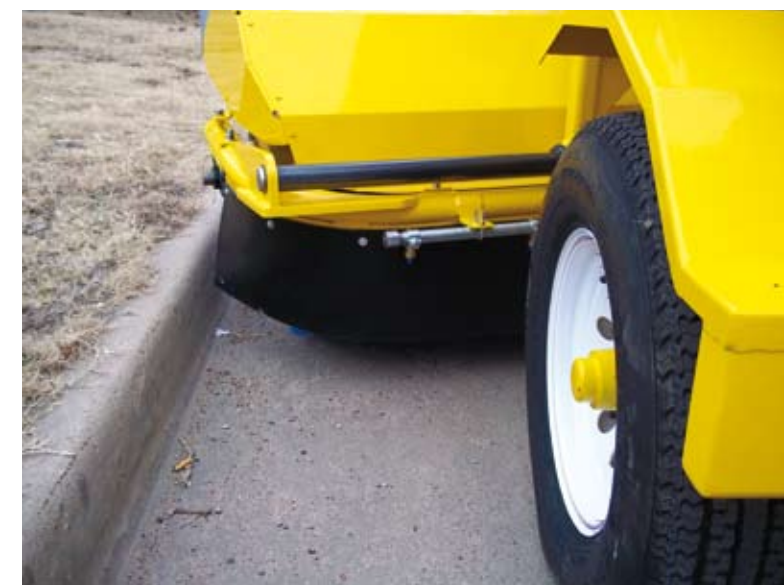
EASY ENGINE ACCESS
Engine cover doors on right and left sides provide easy access for maintenance.



RADIATOR-OIL COOLER ACCESS DOOR
Standard swing out door for easy cleaning and maintenance of your radiator, oil cooler and A/C condenser are vital to dependable operation. Proper hydraulic oil temperatures are key to extending the life of your hydraulic components. Superior Broom makes it easy to keep your coolers clean.



TOW PACKAGE
Neutral shift for towing makes moving your Superior Broom easy with fold down tow hitch and safety chains.



OPTIONAL BRUSH SIDE SHIFT
Brush will shift 12 inches from center right or left for sweeping outside tires. You can now avoid tire sidewall wear and have better operator visibility to the brush.