

# D560

ROCK DRILL



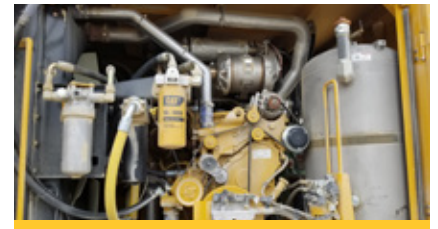
## RELIABLE DRIFTER.

The HPR5128 drifter provides low cost of ownership and reliability through a simple design with high strength materials. Auto lube system along with field serviceability increases productivity. HPR6030 and HPR6832 drifters also available.



## CAROUSEL ROD CHANGER.

The six rod carousel holds 51 mm, 60 mm or 68 mm diameter rods with a multi-pass hole depth of 102' (31.1 m). The precise positioning function indexes and locks, eliminating switches and sensors that are failure prone due to the elements and vibration.



## MORE POWER.

The power group delivers fast cycle times and maximum efficiency with a combination of 550 cfm (15.6 m<sup>3</sup>/min) air capacity, 375 hp (280 kW) Cat® C9.3B engine and an oversized cooler to keep all systems operating at optimal temperatures.



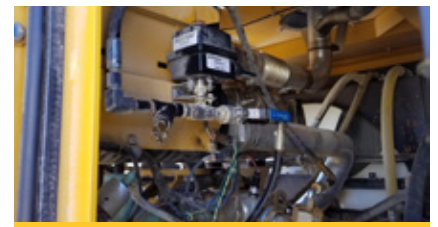
## DURABLE COMPONENTS.

The frame and robust undercarriage provide durability for the demands of drilling and navigating rough terrain. The frame supports the upper machine weight with excellent maneuverability due to its low center of gravity, high ground clearance and independent track oscillation.



## OPERATOR COMFORT.

The cab provides a quiet and comfortable work environment for drill operation. The cab features superior safety features, high visibility safety glass and responsive controls that minimize fatigue.



## FAST SERVICE.

Maintenance friendly designs feature safe and efficient service access with logically located components. Caterpillar dealer service and support keep your machine up and running.

# D560 SPECIFICATIONS

## GENERAL SPECS

<b>HOLE DIAMETER</b>	3.5" - 6.5"	89 - 165 mm
<b>MAX HOLE DEPTH</b>	102.5 "	31 m
<b>ENGINE</b>	Cat® C9.3 Tier 4 or LRC	
<b>HORSEPOWER</b>	375 hp	280 kW
<b>COMPRESSOR</b>	550 cfm	15.6 m³/min
<b>HPR5128 DRIFTER</b>	38 hp	28 kW

## BOOM SYSTEM

<b>BOOM LENGTH</b>	9'	2.7 m
<b>BOOM EXTENSION</b>	3'	0.91 m
<b>BOOM SWING</b>	10° L to 32° R	
<b>BOOM LIFT ABOVE HOR.</b>	50°	
<b>BOOM LIFT BELOW HOR.</b>	29°	
<b>EXT. OFFSET FEED TABLE</b>	3'	0.91 m
<b>FEED SWING</b>	36° L to 37° R	

## HPR5128 DRIFTER

<b>OUTPUT ENERGY</b>	37.5 hp	28 kW
<b>MOTOR TORQUE</b>	1,500 lbf-ft	2033 N-m
<b>WEIGHT</b>	912 lb	414 kg
<b>ROD DIAMETERS</b>	51 mm	
<b>BLOW RATE</b>	2500 - 2700 bpm	
<b>PERCUSSION PRESSURE</b>	2,900 psi	200 bar

## DIMENSIONS

<b>OPERATING LENGTH</b>	27' 5"	8.3 m
<b>OPERATING HEIGHT</b>	30'	9.1 m
<b>OPERATING WIDTH</b>	10' 6"	3.2 m
<b>TRAMMING LENGTH</b>	34' 2"	10.4 m
<b>TRAMMING HEIGHT</b>	12'	3.6 m
<b>SHIPPING LENGTH</b>	36' 9"	11.2 m
<b>SHIPPING HEIGHT</b>	11' 4"	3.4 m
<b>SHIPPING WIDTH</b>	8' 6"	2.6 m
<b>SHIPPING WEIGHT</b>	48,500 lb	21 999 kg

## FEED SYSTEM

<b>STEEL CHANNELS (2)</b>	7"	177.8 mm
<b>PITCH ROLLER CHAIN</b>	1.5"	38.1 mm
<b>GEARBOX DRIVE FORCE</b>	10,000 lb	44 500 N
<b>GEARBOX DRIVE SPEED</b>	121 fpm	36.9 m/min

## HPR6030 DRIFTER

<b>OUTPUT ENERGY</b>	40 hp	30 kW
<b>MOTOR TORQUE</b>	1,500 lbf-ft	2033 N-m
<b>WEIGHT</b>	912 lb	414 kg
<b>ROD DIAMETERS</b>	51 mm/60 mm	
<b>BLOW RATE</b>	2500 - 2700 bpm	
<b>PERCUSSION PRESSURE</b>	2,900 psi	200 bar

## UNDERCARRIAGE

<b>GROUSER PADS</b>	15"	380 mm
<b>GROUND CLEARANCE</b>	16"	406 mm
<b>TRACK GAUGE</b>	80"	2032 mm
<b>HIGH TRAM SPEED</b>	2.7 mph	4.3 km/h
<b>LOW TRAM SPEED</b>	1.7 mph	2.7 km/h
<b>TRACK OSCILLATION</b>	±10°	

## CAROUSEL ROD CHANGER SYSTEM

<b>ROD LENGTH</b>	12'/14'	3.6 m/4.3 m
<b>ROD DIAMETERS</b>	51 mm/60 mm/68 mm	
<b>STARTER ROD</b>	20'/24'	6.1 m/7.3 m
<b>SINGLE PASS DEPTH</b>	18.5'/22.5'	5.63 m/6.83 m
<b>MULTI-PASS DEPTH</b>	102'/106'	31.1 m/31.57 m

## HPR6832 DRIFTER

<b>OUTPUT ENERGY</b>	43 hp	32 kW
<b>MOTOR TORQUE</b>	1,500 lbf-ft	2033 N-m
<b>WEIGHT</b>	912 lb	414 kg
<b>ROD DIAMETERS</b>	60 mm/68 mm	
<b>BLOW RATE</b>	2500 - 2700 bpm	
<b>PERCUSSION PRESSURE</b>	2,900 psi	200 bar

## PRODUCTIVITY

Fast cycle times and maximum efficiency with Cat® C9.3B engine

Large capacity air compressor rated at 550 cfm (15.6 m³/min)

Carousel rod changer reduces rod change time through fast setups

Carousel rod changer accepts multiple lengths and diameters of steel

Unique gate design keeps a rod in position, ready to load

Electronics free rod changer eliminates sensors and switches

Hammers are powerful, durable and serviceable on the boom

Three hammer sizes to meet most common application needs

High capacity dust collection system is easy to clean and service

System monitors main hydraulic systems and auto adjusts

Auto lube system eliminates manual greasing

Undercarriage is dual tram speed 2.7/1.7 mph (4.3/2.7 km/h)

## RELIABILITY

Heavy-duty frame, boom and feed handle rough conditions

Undercarriage is highly maneuverable and durable

Grease lubricated track that reduces track noise and enhances wear life

Long-lasting, field-proven design and components

## SALES AND SERVICE

Sold and serviced exclusively through Caterpillar dealers worldwide.

[WWW.WEILERPRODUCTS.COM](http://WWW.WEILERPRODUCTS.COM)

## OPERATING ENVIRONMENT

Cab is quiet and comfortable for relaxed operation

High visibility with 56.4 ft² (5.24 m²) tinted safety glass windows

Climate controlled cab

Air is filtered to the operator

Door window opens for fresh air and communication

Six way adjustment of the operator seat

Dual joystick controls are ergonomic and seat-mounted

Sunlight Readable 10.1" TFT (touchscreen) color LCD display w/Camera

## SERVICEABILITY

Organized electrical and hydraulic arrangements

Logically located components for straightforward servicing

Pumps and valves conveniently arranged for service

Quick and easy access to all major servicing points

Multiple safety shutdowns at ground level

Back up camera and viewing monitor enhance visibility

Non-slip, heavy-duty steps and handles

## WARRANTY

12 months standard. Extended warranty available.

QEXQ2414