
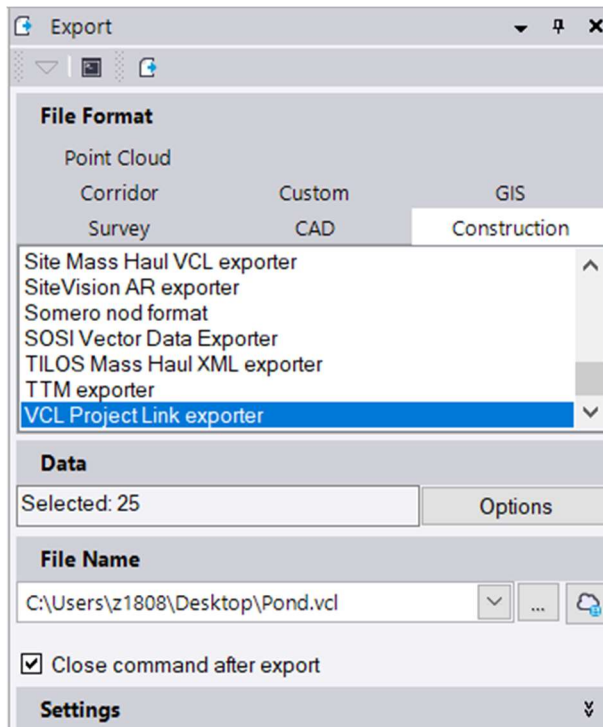


Exporting a VCL

1. Open the Project that needs to be exported
2. Tap the **Export** Icon in the **Home** tab 
3. In the **File Format** select Construction filter and then scroll to the bottom to find “**VCL Project Link Exporter**”
4. In **Data** select all of your linework and surfaces to be highlighted. **If you have your surfaces shut off, turn them on and highlight them** (Only do this for a VCL File)



5. **File Name** should be the project name and then hit the 3 dots to the right to place it on your desktop
6. Tap **Export**
7. Manually drag the VCL file from your desktop into the Project (Design Folder in both File Structures) of your machine or Rover files